

# Lexington Center Office Space Available for Lease

19 Muzzey Street Lexington, MA

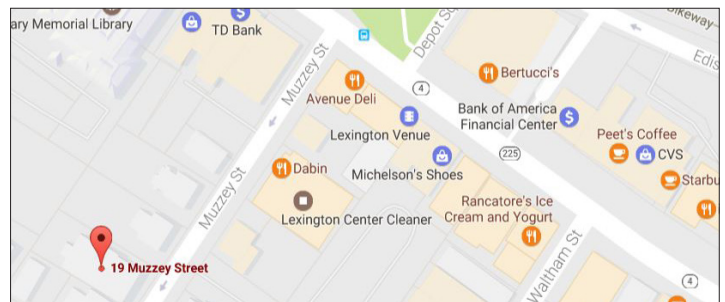


## Property Information

<b>Address:</b>	19 Muzzey Street Lexington, MA	<b>Parking Spaces:</b>	6 - Reserved
<b>Available:</b>	Second Floor: 858 SF (Available 05/01/2024)	<b>Year Built:</b>	1971
<b>Total SF:</b>	21,968 +/- SF	<b>Utilities:</b>	All leases include water, heat, and A/C. Tenant responsible for electric.
<b>Land Area:</b>	.27 Acres		

## Trade Area Demographics

	1 Mile	3 Mile	5 Mile
<b>Population:</b>	7,600	60,088	204,302
<b>Households:</b>	2,754	21,318	75,234
<b>Average HH Income:</b>	\$174,474	\$151,847	\$132,033



19 Muzzey Street is a 21,968 +/- square foot multi-tenant office building. This building is conveniently located off Massachusetts Ave, a diverse retail and residential area in Lexington, MA. Attractive office space with potential for general office use. Property is under new ownership and currently undergoing common area renovations. Property is in close proximity to ample municipal parking and street parking.

For Leasing Information:

**Danny Schwarz**  
781-862-9700 X 227  
ds@sumrp.com

**Gabrielle O'Brien**  
781-862-9700 x 213  
go@sumrp.com

Summit Realty Partners

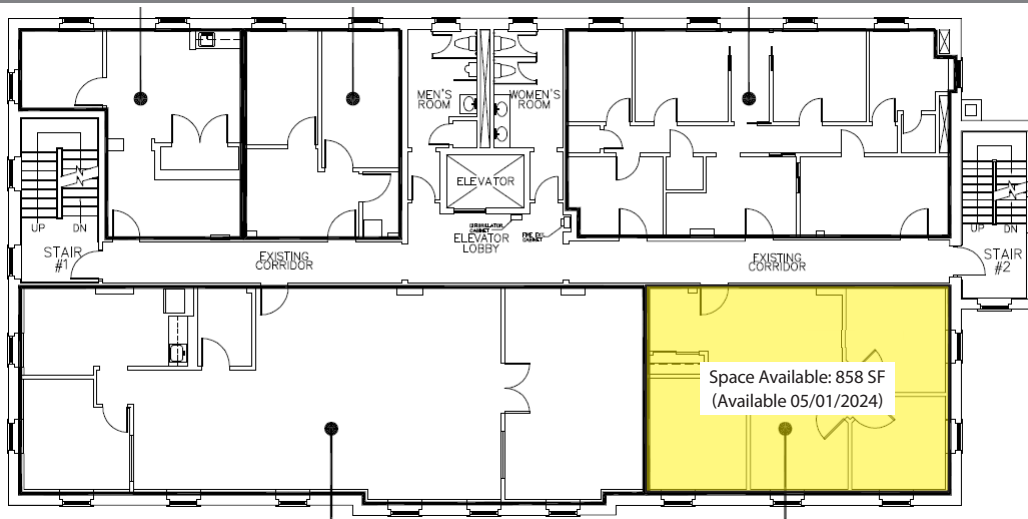
**Summit Realty Partners**  
80 Hayden Ave  
Lexington, MA 02421  
www.summitrealtypartners.com

# Lexington Center Office Space Available for Lease

19 Muzzey Street Lexington, MA



## SECOND FLOOR



Summit Realty Partners

**Summit Realty Partners**  
80 Hayden Ave  
Lexington, MA 02421  
[www.summitrealtypartners.com](http://www.summitrealtypartners.com)